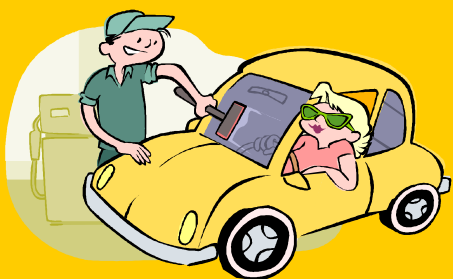


Windshield replacement



Given that the **windshield** directly influences the driver's vision, it is the most important glass component of a vehicle. Therefore its strength and maintenance is a **key security element**.

The trend to increase the glass surface and technological evolution of new automotive glass, has made windshield replacement a very technical operation.

With your security in mind we do our best to provide you with the highest quality of work.

Expertise and professionalism

Carrosserie Bussy has over 50 years-experience in the replacement of automotive glass and respects the manufacturing standards for **all types of vehicles:**

- personal cars,
- motor homes
- utility vehicles
- trucks, etc.

all types of automotive glass:

- windshield,
- back window,
- side window,
- sun roof,
- side mirrors,
- tinted glass, thermal glass, heated glass, etc.

Compared with the multitude of offers for windshield repairs, we provide you with a reliable solution and a unique expertise. We also adhere to a stringent set of specifications in order to guarantee you a professional and skillful replacement (or solution).

The products used to replace a glued windshield are technologically demanding and require that the work be undertaken within very strict procedural guidelines (minimum temperature of 15°C, glued surfaces must be dustless and dry, the vehicle has to be on a flat surface, protected from ultra-violet and infra-red rays, etc.)

Customer service

Should your replacement involve reporting the damages to an insurance company, Carrosserie Bussy will advise you and undertake the tasks to process the claim with Swiss or foreign insurance firms.

You can also rely on us at any time for a prompt and professional intervention: we are committed to finding a solution to your problem within 24 hours, to enable you to drive with a safe and secure vehicle.

Should you need a vehicle during the repair, we can provide you with a late-model, air-conditioned courtesy car.

If you are insured for plate glass risk, the repair will be covered by your insurance company according to the terms of your contract.